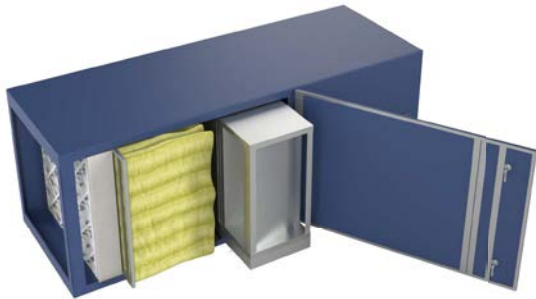


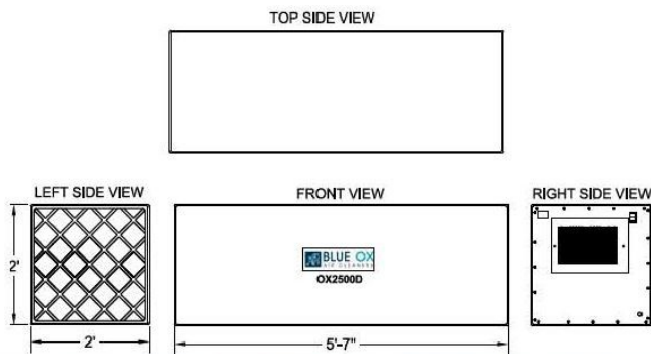
OX2500D-CC Unit

2000 CFM Media Filtration System
3/4 H.P. Direct Drive Fan



Featuring a straight through airflow, and a Locking Hinged Door for easy access, the OX2500D is simple to use and maintain. It utilizes high efficiency disposable filters which have been constructed from micro glass fibers. Unit is produced using 16 gauge Cold-Rolled steel, finished in a Polyester Powder Coating Paint. Each unit is a self-contained system and can be used individually for smaller operations or in groups for larger areas. This unit has a low air-flow-to-filter ratio that provides the highest efficiency. A variety of filter options and mounting hardware available. The CC Model also includes a 36 pound Carbon Canister for heavy odor control. A Three Year Warranty included on all parts besides filters.

Unit Specifications		Technical Specifications	
Air Flow max	2000 CFM	Motor Type	PSC-Direct Drive
Ship Weight	245 lbs	H.P.	3/4 H.P.
Hang Weight	225 lbs	Volts	115 V
Dimensions	24"W x 26"T x 67"L	Amps	10.2
Finish	Blue, Brown, Black	Watts	1025 W
Grill/Louver	4-Way Adjustable	Noise Level	62 dBA's @5'



Accessories

Included Filters

- 24" x 24" x 4" - 35% Washable Mesh Pre Filter
- 24" x 24" x 15" - 95% 12 Pocket Bag Filter
- 24" x 24" x 12" - 36 lb. Carbon After Filter

Optional Filters

- 24" x 24" x 4" - Aluminum Mesh Pre-Filter
Replaces Pleated Filter

Cabinet Options

- Silencer with Louver
Reduces sound 6-8 decibels
- Silencer with Grill
Reduces sound 10-12 decibels
- Magnehelic Pressure Gauge
Indicates when to change filters
- Eye-Bolts (4)
Factory Installed Mounting Bolts
- Eye- Bolt Mounting Kit
Includes Eye-Bolts, Chain and Q-Links
- Dual L-Brackets
Underside brackets for Wall Mounting
- Strut Channel
Underside strut for Ceiling Mounting
- Drain Plug
Oil/Mist application drain via Hose Barb
- Ultraviolet Light Bar Catalyst
Kills airborne bacteria, mold and Viruses
- Other options including different Motor Voltage available