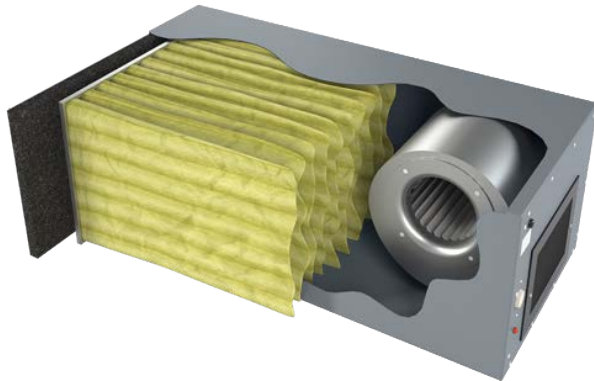


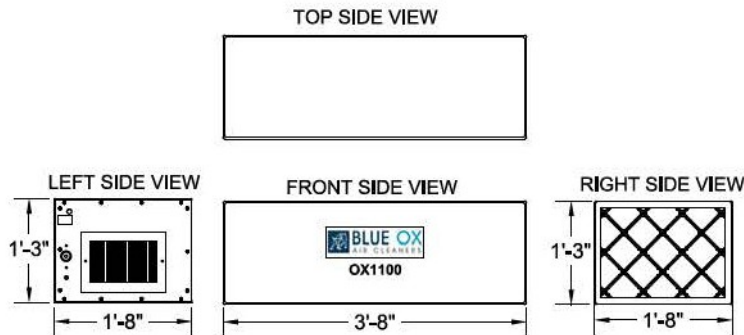
OX1100 Unit

1100 CFM Media Filtration System
1/4 H.P. Direct Drive Fan



The BLUE OX 1100 has been engineered in a heavy duty 16-gauge Cold-Rolled steel cabinet and finished with Polyurethane Powder Coating Paint. These smaller units can be placed in confined space applications and have quiet operation with variable speed. High efficiency micro-glass fibers are used to catch the particulate. Each unit is self-contained for use individually or in groups. The OX 1100 is perfect for applications such as woodworking, grinding dust, bondo dust, oil mist, allergens, or any application that does not require odor control. Silencers and mounting kits available. Units have a Three Year Warranty on all parts besides filters.

Unit Specifications		Technical Specifications	
Air Flow max	1100 CFM	Motor Type	PSC-Direct Drive
Ship Weight	100 bs	H.P.	1/4 H.P.
Hang Weight	90 bs	Volts	115 V
Dimensions	20"W x 15"T x 44"L	Amps	3.5
Finish	Gray, Brown, White	Watts	500 W
Grill/Louver	4-Way Adjustable	Noise Level	48 dBA's @5



Accessories

Included Filters

- 15" x 20" x 1" - 35% Washable Foam Pre Filter
- 15" x 20" x 24" - 95% 6 Pocket Bag Filter

Cabinet Options

- Silencer with Louver
Reduces sound 6-8 decibels
- Magnehelic Pressure Gauge Indicates when to change filters
- Eye-Bolts (4)
Factory Installed Mounting Bolts
- Eye- Bolt Mounting Kit
Includes Eye-Bolts, Chain and Q-Links
- Dual L-Brackets
Underside brackets for Wall Mounting
- Drain Plug
Oil/Mist application drain via Hose Barb
- Other options including different Motor Voltage available