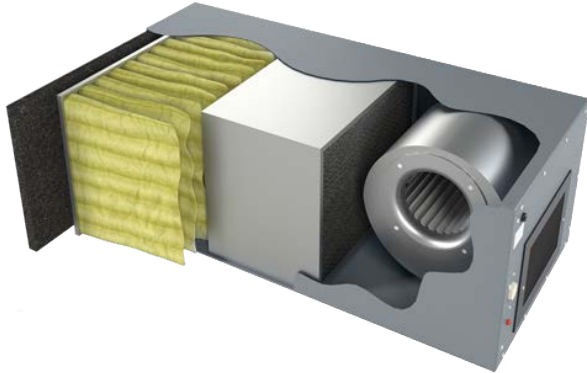


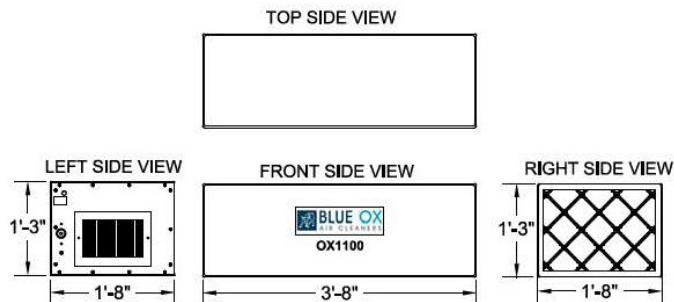
OX1100-HE Unit

825 CFM Media Filtration System
1/4 H.P. Direct Drive Fan



The BLUE OX1100 has been engineered in a heavy duty 16-gauge Cold-Rolled steel cabinet and finished with Polyurethane Powder Coating Paint. These smaller units can be placed in confined space applications and have quiet operation with variable speed. High efficiency micro-glass fiber are used to catch the particulate. Each unit is self-contained for use individually or in groups. The HE unit includes a 99.95% True HEPA at .3 Microns ideal for applications such as clay dust, granite dust, welding fume, or any application requiring HEPA filtration. Units have a Three Year Warranty included on all parts besides filters.

| Unit Specifications | | Technical Specifications | |
|---------------------|--------------------|--------------------------|------------------|
| Air Flow max | 825 CFM | Motor Type | PSC-Direct Drive |
| Ship Weight | 125 bs | H.P. | 1/4 H.P. |
| Hang Weight | 115 bs | Volts | 115 V |
| Dimensions | 20"W x 15"T x 44"L | Amps | 3.5 |
| Finish | Gray, Brown, White | Watts | 500 W |
| Grill/Louver | 4-Way Adjustable | Noise Level | 48 dBA's @5 |



Accessories

Included Filters

- 15" x 20" x 1" - Foam Pre-filter - Washable
- 15" x 20" x 12" - 95% 6 Pocket Bag Filter
- 15" x 20" x 12" - 99.97% True HEPA Filter

Cabinet Options

- Silencer with Louver
Reduces sound 6-8 decibels
- Magnehelic Pressure Gauge
Indicates when to change filters
- Eye-Bolts (4)
Factory Installed Mounting Bolts
- Eye- Bolt Mounting Kit
Includes Eye-Bolts, Chain and Q-Links
- Dual L-Brackets
Underside brackets for Wall Mounting
- Drain Plug
Oil/Mist application drain via Hose Barb
- Other options including different Motor Voltage available