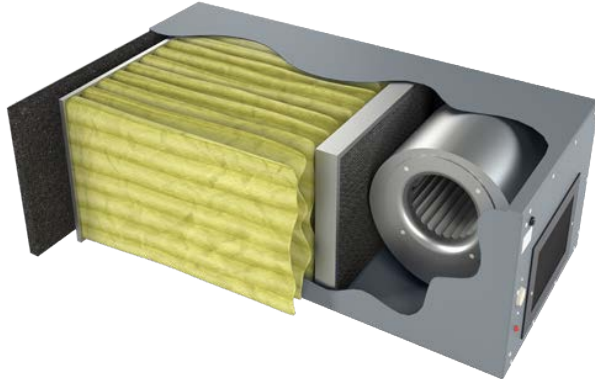


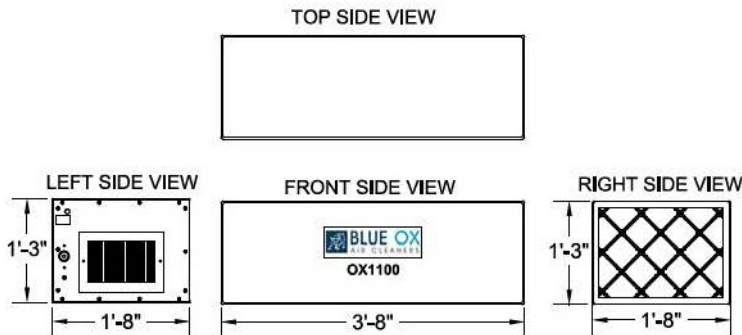
# OX1100-CF Unit

. 1000 CFM Media Filtration System  
1/4 H.P. Direct Drive Fan



The BLUE OX1100 has been engineered in a heavy duty 16-gauge Cold-Rolled steel cabinet and finished with Polyurethane Powder Coating Paint. These smaller units can be placed in confined space applications and have quiet operation with variable speed. High efficiency micro-glass fiber are used to catch the particulate. Each unit is self-contained for use individually or in groups. The OX1100-CF is perfect for applications such as tobacco smoke, welding fume, grinding dust, or any application requiring sub-micron filtration and odor control. Silencers and mounting kits available. The CF Model also includes a 2" thick Carbon. After Filter for mild odor control. A Three Year Warranty included on all parts besides filters.

Unit Specifications		Technical Specifications	
<b>Air Flow max</b>	1000 CFM	<b>Motor Type</b>	PSC-Direct Drive
<b>Ship Weight</b>	131 bs	<b>H.P.</b>	1/4 H.P.
<b>Hang Weight</b>	100 bs	<b>Volts</b>	115 V
<b>Dimensions</b>	20"W x 15"T x 44"L	<b>Amps</b>	3.5
<b>Finish</b>	Gray, Brown, White	<b>Watts</b>	500 W
<b>Grill/Louver</b>	4-Way Adjustable	<b>Noise Level</b>	48 dBA's @5



## Accessories

### Included Filters

- 15" x 20" x 1" - Foam Pre-filter - Washable
- 15" x 20" x 24" - 95% 6 Pocket Bag Filter
- 15 x 20 x 2" Charcoal After-filter - 75% Fill

### Cabinet Options

- Silencer with Louver  
Reduces sound 6-8 decibels
- Magnehelic Pressure Gauge  
Indicates when to change filters
- Eye-Bolts (4)  
Factory Installed Mounting Bolts
- Eye- Bolt Mounting Kit  
Includes Eye-Bolts, Chain and Q-Links
- Dual L-Brackets  
Underside brackets for Wall Mounting
- Drain Plug  
Oil/Mist application drain via Hose Barb
- Other options including different Motor Voltage available