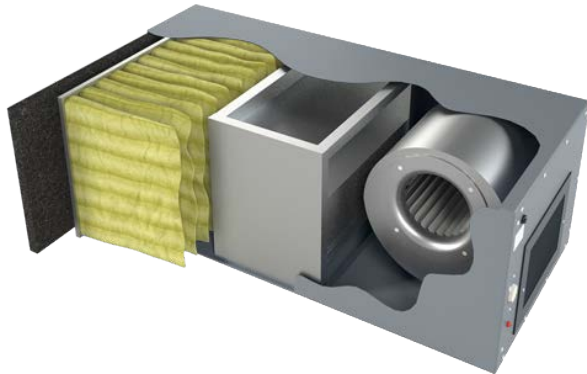


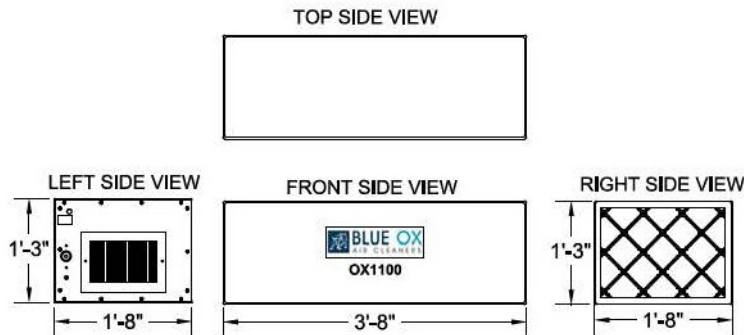
OX1100-CC Unit

11 € CFM Media Filtration System
1/4 H.P. Direct Drive Fan



The BLUE OX1100 has been engineered in a heavy duty 16-gauge Cold-Rolled steel cabinet and finished with Polyurethane Powder Coating Paint. These smaller units can be placed in confined space applications and have quiet operation with variable speed. High efficiency micro-glass fibers are used to catch the particulate. Each unit is self-contained for use individually or in groups. The OX1100-CC is perfect for paint overspray, tobacco smoke, printing, or any application where odors/VOCs are the main concern. Silencers and mounting kits available. Units have a Three Year Warranty on all parts besides filters.

Unit Specifications		Technical Specifications	
Air Flow max	850 ACFM	Motor Type	PSC-Direct Drive
Ship Weight	131 bs	H.P.	1/4 H.P.
Hang Weight	120 bs	Volts	115 V
Dimensions	20"W x 15"T x 44"L	Amps	3.5
Finish	Gray, Brown, White	Watts	500 W
Grill/Louver	4-Way Adjustable	Noise Level	48 dBA's @5



Accessories

Included Filters

- 15" x 20" x 1" - Foam Pre-filter - Washable
- 15" x 20" x 12" - 95% 6 Pocket Bag Filter
- 15" x 20" x 12" - 18 lb. Carbon Canister

Cabinet Options

- Silencer with Louver
Reduces sound 6-8 decibels
- Magnehelic Pressure Gauge
Indicates when to change filters
- Eye-Bolts (4)
Factory Installed Mounting Bolts
- Eye- Bolt Mounting Kit
Includes Eye-Bolts, Chain and Q-Links
- Dual L-Brackets
Underside brackets for Wall Mounting
- Drain Plug
Oil/Mist application drain via Hose Barb
- Other options including different Motor Voltage available