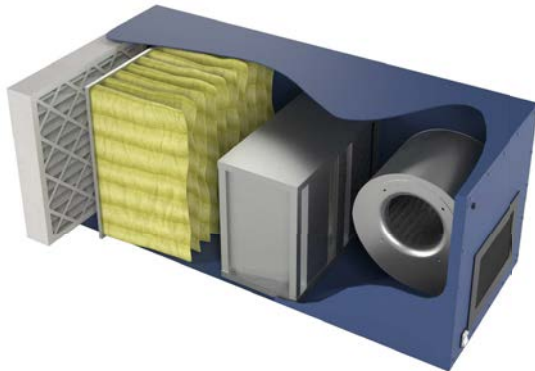


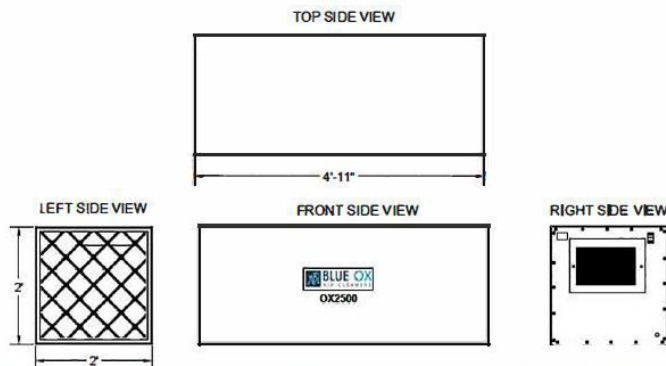
OX2500-CC Unit

2000 CFM Media Filtration System
3/4 H.P. Direct Drive Fan



Featuring a straight through airflow, the Blue OX2500 utilizes high efficiency disposable filters which have been constructed from micro - glass fibers. The OX2500's housing is produced using 16 gauge Cold-Rolled steel, finished in a Polyester Powder Coating Paint. Each unit is a self-contained system and can be used individually for smaller operations or in groups for larger areas. This unit has a low air-flow-to-filter ratio that provides the highest efficiency and long filter life. Additional cabinet and filter options available. The CC Model also includes a 36 pound Carbon Canister for heavy odor control. A Three Year Warranty included on all parts besides filters.

Unit Specifications		Technical Specifications	
Air Flow max	2000 CFM	Motor Type	PSC-Direct Drive
Ship Weight	200 lbs	H.P.	3/4 H.P.
Hang Weight	190 lbs	Volts	115 V
Dimensions	24"W x 24"T x 59"L	Amps	10.2
Finish	Blue, Brown, Black	Watts	950 W
Grill/Louver	4-Way Adjustable	Noise Level	62 dBA's @5



Accessories

Included Filters

- 24" x 24" x 4" - 35% Pleated Fiber Pre Filter
- 24" x 24" x 15" - 95% 8 Pocket Bag Filter
- 24" x 24" x 12" - 36 lb. Carbon After Filter

Optional Filters

- 24" x 24" x 4" - Aluminum Mesh Pre Filter Washable and Reusable - Replaces Pleated
- 24" x 24" x 15" - 65% 8 Pocket Bag Filter Replaces 65% Bag Filter

Cabinet Options

- Silencer with Louver
Reduces sound 6-8 decibels
- Silencer with Grill
Reduces sound 10-12 decibels
- Magnehelic Pressure Gauge Indicated when to change filters
- Eye-Bolts (4)
Factory Installed Mounting Bolts
- Eye- Bolt Mounting Kit
Includes Eye-Bolts, Chain and Q-Links
- Dual L-Brackets
Underside brackets for Wall Mounting
- Strut Channel
Underside strut for Ceiling Mounting
- Drain Plug
Oil/Mist application drain via Hose Barb
- Ultraviolet Light Bar Catalyst
Kills airborne bacteria, mold and Viruses
- Other options including different Motor Voltage available