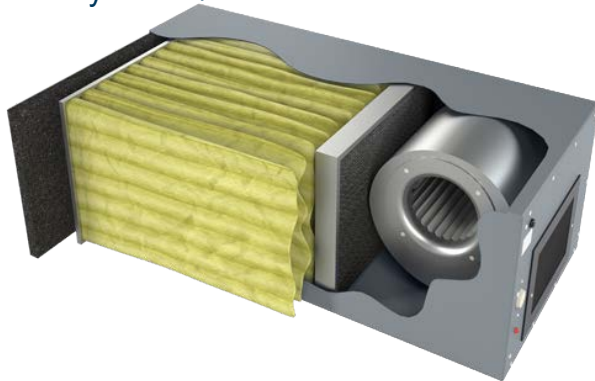


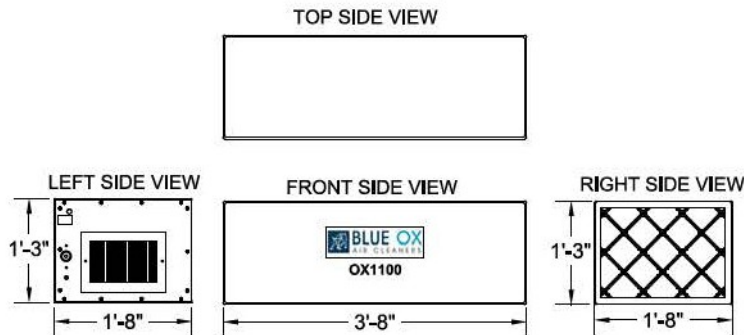
OX1100-CF Unit

1100 CFM Media Filtration
System 1/4 H.P. Direct Drive Fan



The BLUE OX1100 has been engineered in a heavy duty 16-gauge Cold-Rolled steel cabinet and finished with Polyurethane Powder Coating Paint. These smaller units can be placed in confined space applications and have quiet operation with variable speed. High efficiency micro-glass fiber are used to catch the particulate. Each unit is self-contained for use individually or in groups. The OX1100-CF is perfect for applications such as tobacco smoke, welding fume, grinding dust, or any application requiring sub-micron filtration and odor control. Silencers and mounting kits available. The CF Model also includes a 2" thick Carbon. After Filter for mild odor control. A Three Year Warranty included on all parts besides filters.

Unit Specifications		Technical Specifications	
Air Flow max	1100 CFM	Motor Type	PSC-Direct Drive
Ship Weight	131 bs	H.P.	1/4 H.P.
Hang Weight	100 bs	Volts	115 V
Dimensions	20"W x 15"T x 44"L	Amps	3.5
Finish	Gray, Brown, White	Watts	500 W
Grill/Louver	4-Way Adjustable	Noise Level	48 dBA's @5



Accessories

Included Filters

- 15" x 20" x 1" - Foam Pre-filter - Washable
- 15" x 20" x 24" - 95% 6 Pocket Bag Filter
- 15 x 20 x 2" Charcoal After-filter - 75% Fill

Cabinet Options

- Silencer with Louver
Reduces sound 6-8 decibels
- Magnehelic Pressure Gauge
Indicates when to change filters
- Eye-Bolts (4)
Factory Installed Mounting Bolts
- Eye- Bolt Mounting Kit
Includes Eye-Bolts, Chain and Q-Links
- Dual L-Brackets
Underside brackets for Wall Mounting
- Drain Plug
Oil/Mist application drain via Hose Barb
- Other options including different Motor Voltage available